

PATTA



BAAN NATCHA



PATTA VILLAGE



PATTA TOWN



PATTALET 1



PATTALET 2



ARCADE

PATTA ELEMENT

HORIZON

*Chieftain*

CASCADE



# PATTA



SINCE OUR FIRST ESTABLISHMENT  
IN FEBRUARY 2006,

Patta's real estate journey has come a long way. Foreseeing the emerging era of Pattaya, our founders took a bold chance and became the pioneer who reimagined the city's housing industry with living solutions that bring stylish design, high quality standard and functionality altogether. Until dates, these are the core pillars Patta properties have been known for and proud of.

From the initial majestic project BAAN NATCHA which introduced luxurious Thai contemporary concept to the industry, PATTA VILLAGE which offers greater access to a wider group of housing customers, PATTA TOWN which redefines townhome in the market to later projects including PATTALET 1 & 2, PATTA PRIME, PATTA VILLE and PATTA DEFINE



FOR ALMOST TWO DECADES,  
PATTA'S MASTERY OF QUALITY LIVING  
NEVER STOPS CAPTIVATING.



GUARANTEED BY



## WHY PATTA ?

### CREDIBLE

Our extensive experiences in real estate industry allow us to help define the living solutions of choice

### RELIABLE

Over 10 years, Patta has been committed to delivering services of trust.

### UP-TO-DATE

To Patta, finest living solutions are ones that enable finest quality of life in a timeless manner.

### PASSIONATE

In every detail of Patta living solution is our attentive heart that cares to give only uncompromised quality.

### FRIENDLY

The joy of Team Patta is knowing that our services bring Patta Family life of delight beyond a period of time.





## CORE BRAND VALUE

“PATTA, as one of the most prolific property developers in the region, portrays our passion and determination into shaping your living solution. sustainability, aesthetic, and finest-living are our approach to every opportunity.”

### SUSTAINABILITY (And trust)

Without the assistance of everyone involved in the past, PATTA would not have been able to get to this point. As a result, we've established key milestones with all stakeholders and communities in order to ensure long-term growth and sustainability. To achieve that goal, we started from the beginning by establishing a trust foundation and incorporating it into everything we do.

### AESTHETIC

At PATTA, styles are the essence of a house, and they represent the occupants' personalities. Our houses are all attractive and have been meticulously picked, planned, and built. As a result, you may genuinely enjoy and express your own personality on your own terms.

### FINEST-LIVING

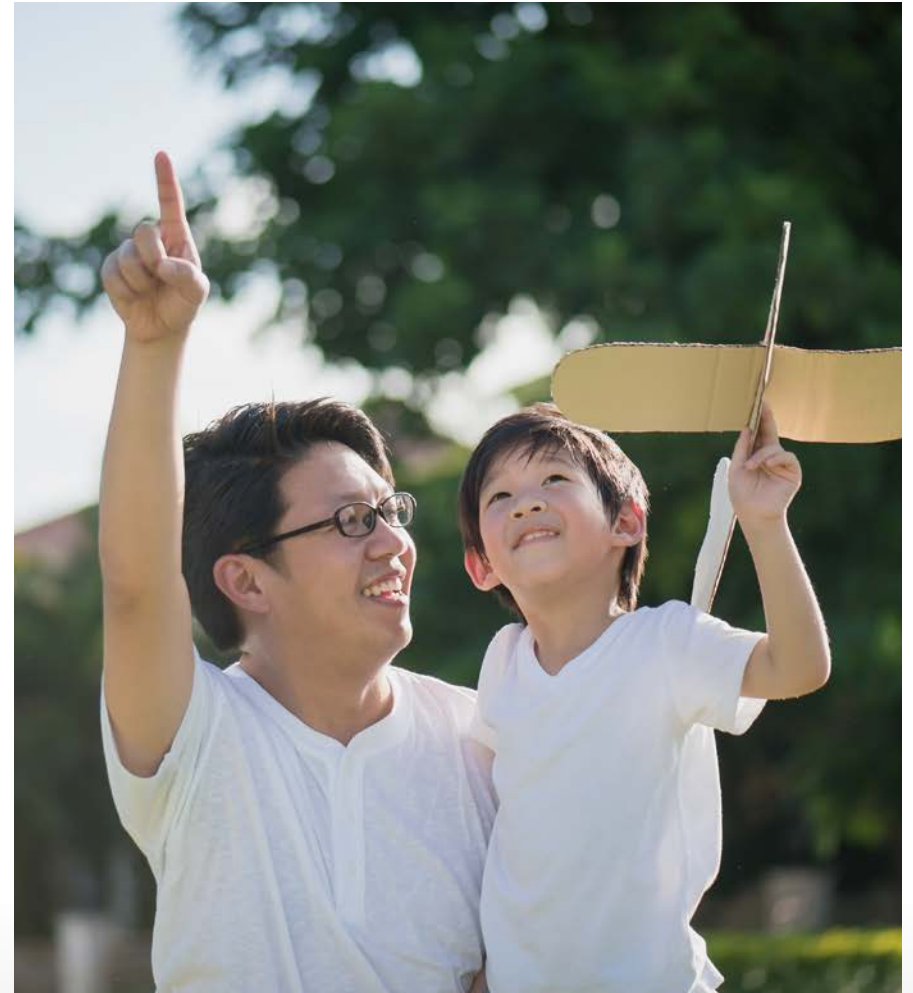
Nothing matters more to us than ensuring our customers' complete contentment. That is the heart and soul of what we're doing here at PATTA. So, we begin to deliver nothing but the best, not just a house but with all the details attached to it.



---

FORWARD VISION

---



---

QUALITY THAT TRULY SATISFY

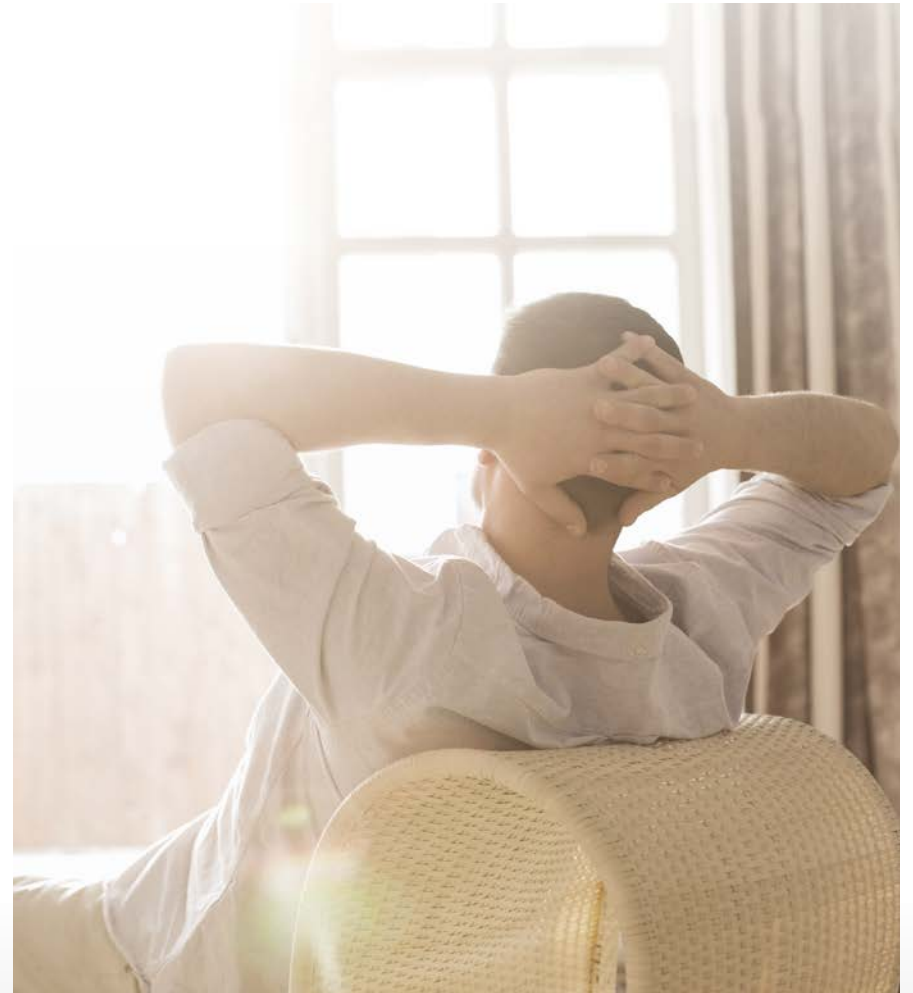
To be the pride of housing industry in Eastern Seaboard by offering  
living solutions that go beyond expectation



---

MISSION

---



---

"QUALITY" IS THE KEY

To enable finest quality of life with living solutions of uncompromised quality



MORE THAN A DREAM,  
BUT A PRIDE  
YOU CAN LIVE IN.

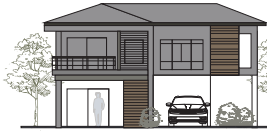


# PATTA PROJECTS OVERVIEW

## PREVIOUS PROJECTS



2004



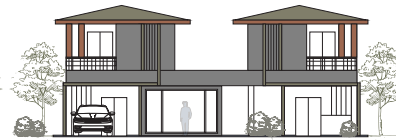
2010



2012



2013



2014



2017

## CURRENT PROJECTS



2019



2019



2020



2022

## UPCOMING PROJECTS

PATTA ELEMENT

2022

HORIZON

2022

Chieftain

2023

CASCADE

2023

OVERALL CURRENT PROJECTS



**PATTA**  
PRIME  
MONUMENT OF SUCCESS

ON SALE : 209 UNITS  
**99% SOLD (207 UNITS)**



**PATTA**  
DEFINE  
TIMELESS LIVING

ON SALE : 374 UNITS  
**87% SOLD (326 UNITS)**



**ARCADE**  
THE FINEST LEGACY

PRE SALE : 49 UNITS  
**33% SOLD (16 UNITS)**



/// ———  
MONUMENT OF SUCCESS  
/// ———

Success isn't the end. It's the beginning, the dawn of a better day when memories start. Now perfect your new day with us at PATTA Prime



With its position next to the emerging motorway, overarching functionality developed from deep user insights, and a sleek Art Deco design inspiration,

Patta Prime unlocks your opportunity to fully live a life of true success.

Estimated Project Area: 68 Rai  
House Type: Single detached home  
Total Unit: 209 Units  
Location: Next to International School of the Regents (ISR)

**99% SOLD (207 UNITS)**



///  
LIVING PRIDE OF FREEDOM  
///

Discover your spacious field of private life where your true self freely reaches its zenith.



With curated living environment, a location in prime Banglamung-Laem Chabang area, bold designs, and complete functionality,

Patta Define allows your unique sense of being to shine its brightest like never before.

**Estimated Project Area:** 84-1-90.6 Rai  
**House Type:** Single detached home and Twin House  
**Total Unit:** 374 Units  
**Location:** Banglamung 13

**87% SOLD (326 UNITS)**

# ARCADE



---

///

## THE FINEST LEGACY

///

---

Here comes the moment of your lasting pride.  
The masterpiece born by your life work.



---

Beyond spacious rooms dedicated to various functionalities, ARCADE provides open outdoor area flexible to landscape customization as owner may desire namely a garden, a swimming pool or a pavilion.

The finest living space is the one that allows endless flow of life possibilities.

---

Estimated Project Area: 20 Rai  
House Type: Single detached home  
Total Unit: 49 Units  
Location: Nong Pla Lai, Banglumung  
Year of construction: 2021

**33% SOLD (16 UNITS)**

OVERALL UPCOMING PROJECTS



PATA ELEMENT



HORIZON



*Chieftain*



CASCADE

# PATTA ELEMENT



---

## THE GREENERY WITHIN

---

Nature is one of the element in life.  
Discover your true nature within a green surrounding area with ELEMENT



---

Reunite your life with nature surrounded by a 425 sq.m lake within an extremely convenient location in the Banglamung-Laem Chabang area.

ELEMENT will once again blend your life into nature

---

Estimated Project Area: 63-3-41.70 Rai  
House Type: Single detached home and Twin House  
Total Unit: 266 Units  
Location: Rong Po, Banglamung  
Year of construction: 2022



# HORIZON



---

///

## THE LIVING CRUISE

///

---

Passage to horizon view as the absolute function inspired by the cruise.



---

///

With calm and peaceful life to maximize living space and integrate nature within all unit.

Estimated Project Area: 43-1-15 Rai  
House Type: Single detached home and Twin House  
Total Unit: 140 Units  
Location: Nong Pla Lai, Banglamung  
Year of construction: 2022

# Chieftain



---

///

## THE REMARKABLE MILESTONE

///

---

Imagine a distinct ART-DECO style that combines wellness and fashion to complement your personalized lives.



---

///

The place where you may be entirely open about your preferences and tastes. With a fantastic position next to the 36th Motorway.

CHIEFTAIN gives you the chance to maximize your travel potential and exposes your lifestyles.

---

///

Estimated Project Area: 28-3-85 Rai  
House Type: Single detached home  
Total Unit: 70 Units  
Location: Nong Pla Lai, Banglamung  
Year of construction: 2023

# CASCADE



---

///

## THE NEW LIFE BOUNDARY

///

---

An aesthetic space within an urban luxury lifestyle that will broaden your living boundaries and bring your life to its fullness.



---

///

With integrated lifestyles and a rich environment, designed for all conditions that focus on long-term satisfaction to bring you more soul, mind, and living space

CASCADE redefines the definition of space and detail oriented

Estimated Project Area: 68 Rai  
House Type: Single detached home  
Total Unit: 168 Units  
Location: Nong Prue, Banglamung  
Year of construction: 2023

PAST PROJECTS DEVELOPMENT





BAAN NATCHA



PATTA VILLAGE



PATTA TOWN



THE WISDOM OF THAI-CONTEMPORARY ART

Seamless design inspired by the uniqueness of Thai.  
The one and only luxury villas locate in city centre  
Reveal the superb elegance in all details.



REFLECTION OF THE FINEST LIFESTYLE

The picture of quality living  
amidst the serenity and peacefulness.  
Locate in the heart of Siam Country Club Street.



MAKE EVERY BEGINNING MEMORABLE

Because all moments are full of stories.



PATTALET 1



///  
LIVING MADE SIMPLER  
///

A variety of practical, efficient and airy living space.  
Inspired by the finest influences of modern design.  
Make your dream lifestyle come true.

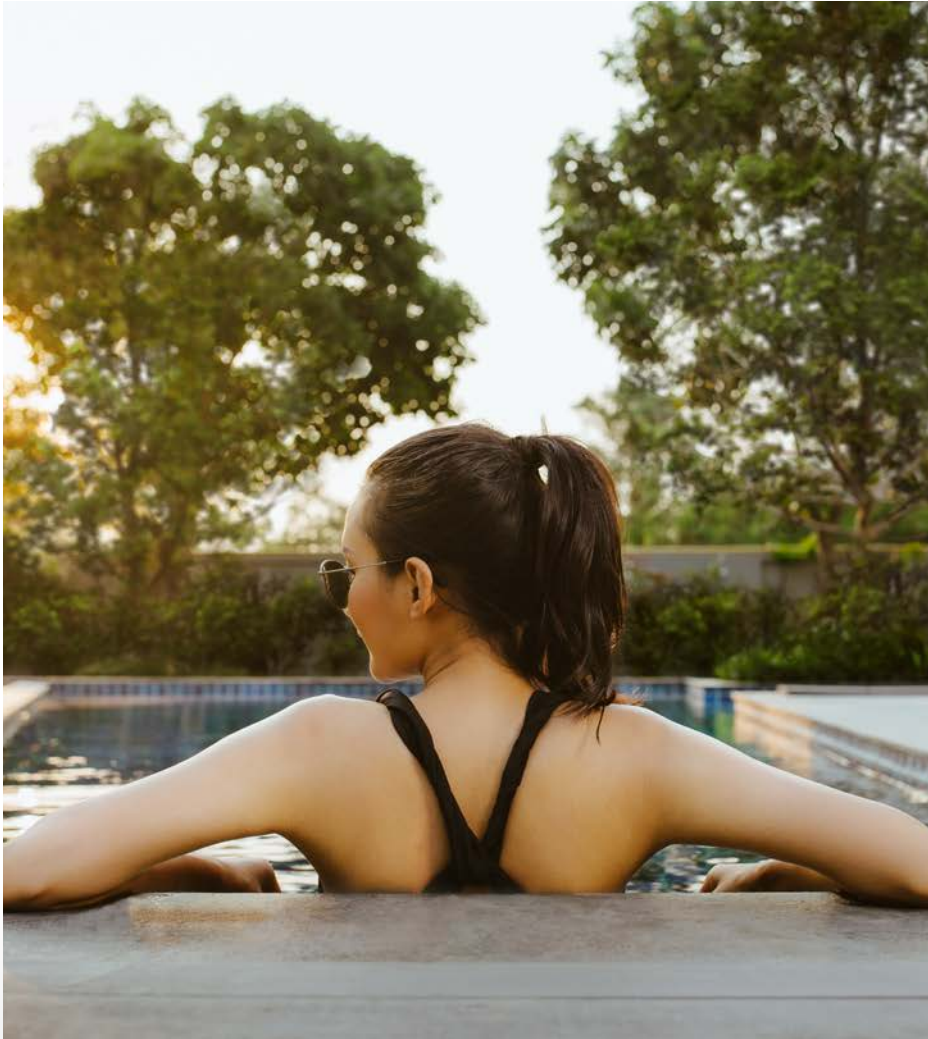


PATTALET 2



///  
REDEFINE THE DEFINITION OF TWIN HOUSE  
///

To the new meaning of urban living.  
Give everyday the chance to be yourself.



---

THE PARONAMIC LIVING

---

Lifestyle of exceptional privilege amidst and utter unwinding atmosphere.  
Live as if everyday is a perfect vacation.



---

Located at the stunning location in the heart of the hill at Siam Royal View, PATTA Elite offers single-storey pool villas where you can relish the superior privacy and the state-of-the-art tropical design that make everyday your getaway vacation. Every unit is cleverly positioned to provide you a vast panoramic view of Pattaya city from the coziness of your own villa, with additional sea view in selected units.



///  
CHARMS OF LIVING  
///

Reflection of the unique modern lifestyle Minimalist design with maximum living Enjoy every moment to the fullest



With extensive spacing method, stylish decorative charms, endearing greenery facilities and a location of extreme convenience,

Patta Ville reflects the heart and soul of those who trust in a modern way of life.

**Estimated Project Area:** 16-3-91 Rai  
**House Type:** Single detached home and Home Office  
**Total Unit:** 125 Units  
**Location:** Soi Siam Country Club (Pornpraphanimit 26)



“WHERE YOUR BODY  
FEELS AT EASE  
AND YOUR HEART  
FEELS AT HOME.”

